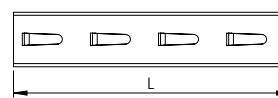
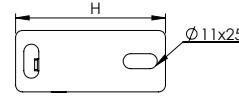
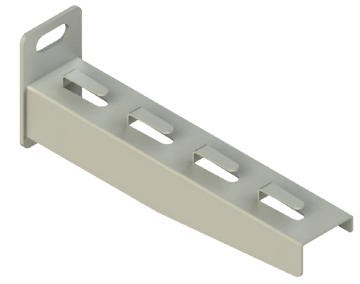




### WALL BRACKET WITH HOOK ( EG & HDG )

Консоль Для Проволочного Лотка ( ЭГ и Гор. Цинк )

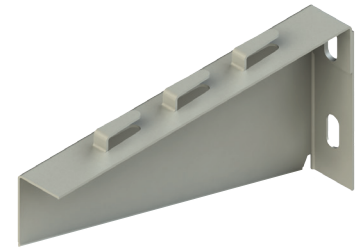
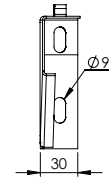
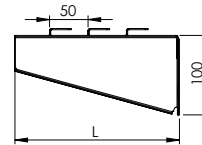
| Product Code-1<br>Код Товара | Product Code-2<br>Код Товара | L<br>mm | T1<br>mm | T2<br>mm | H<br>mm | Weight / Штук<br>(Kg/Pcs) |
|------------------------------|------------------------------|---------|----------|----------|---------|---------------------------|
| AT6-10K EG                   | AT6-10K HDG                  | 100     | 1,5      | 3,00     | 110     | 0,160                     |
| AT6-15K EG                   | AT6-15K HDG                  | 150     | 1,5      | 3,00     | 110     | 0,200                     |
| AT6-20K EG                   | AT6-20K HDG                  | 200     | 1,5      | 3,00     | 110     | 0,235                     |
| AT6-25K EG                   | AT6-25K HDG                  | 250     | 1,5      | 4,00     | 150     | 0,320                     |
| AT6-30K EG                   | AT6-30K HDG                  | 300     | 1,5      | 4,00     | 150     | 0,410                     |
| AT6-40K EG                   | AT6-40K HDG                  | 400     | 2,0      | 4,00     | 150     | 0,730                     |
| AT6-50K EG                   | AT6-50K HDG                  | 500     | 2,0      | 4,00     | 150     | 0,875                     |
| AT6-60K EG                   | AT6-60K HDG                  | 600     | 2,0      | 4,00     | 150     | 1,025                     |



### WALL BRACKET LIGHT WITH HOOK ( PG & HDG )

Консоль Легкая ( Сендзимир и Гор. Цинк )

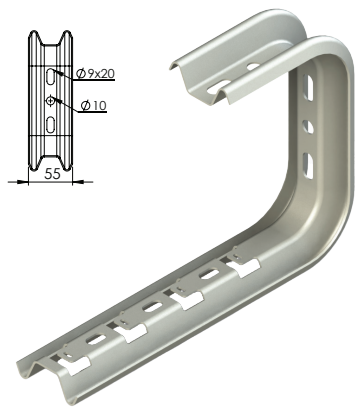
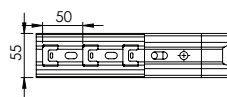
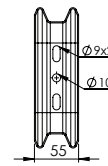
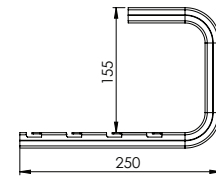
| Product Code-1<br>Код Товара | Product Code-2<br>Код Товара | L<br>mm | T<br>mm | Weight / Штук<br>(Kg/Pcs) |
|------------------------------|------------------------------|---------|---------|---------------------------|
| AT6-10 PG                    | AT6-10 HDG                   | 110     | 1,5     | 0,230                     |
| AT6-15 PG                    | AT6-15 HDG                   | 160     | 1,5     | 0,270                     |
| AT6-20 PG                    | AT6-20 HDG                   | 210     | 1,5     | 0,295                     |
| AT6-25 PG                    | AT6-30 HDG                   | 260     | 1,5     | 0,310                     |
| AT6-30 PG                    | AT6-40 HDG                   | 310     | 1,5     | 0,440                     |
| AT6-40 PG                    | AT6-50 HDG                   | 410     | 2,0     | 0,615                     |
| AT6-50 PG                    | AT6-50 HDG                   | 510     | 2,0     | 0,760                     |
| AT6-60 PG                    | AT6-60 HDG                   | 610     | 2,0     | 0,900                     |



### BRACKET OMEGA TYPE WITH HOOK ( PG & HDG )

Консоль Омега для Проволочного Лотка ( Сендзимир & Гор. Цинк )

| Product Code-1<br>Код Товара | Product Code-2<br>Код Товара | H<br>mm | W<br>mm | T<br>mm | Weight / Штук<br>(Kg/Pcs) |
|------------------------------|------------------------------|---------|---------|---------|---------------------------|
| AT8-10 PG                    | AT8-10 HDG                   | 100     | 110     | 1,2     | 0,300                     |
| AT8-15 PG                    | AT8-15 HDG                   | 100     | 160     | 1,2     | 0,340                     |
| AT8-20 PG                    | AT8-20 HDG                   | 100     | 210     | 1,2     | 0,400                     |
| AT8-30 PG                    | AT8-30 HDG                   | 100     | 310     | 1,2     | 0,510                     |
| AT8-40 PG                    | AT8-40 HDG                   | 100     | 410     | 1,5     | 0,800                     |
| AT8-50 PG                    | AT8-50 HDG                   | 100     | 510     | 1,5     | 0,890                     |
| AT8-60 PG                    | AT8-60 HDG                   | 100     | 610     | 1,5     | 0,980                     |



### CEILING BRACKET OMEGA TYPE WITH HOOK ( PG & HDG )

Консоль Потолочная для Проволочного Лотка ( Сендзимир & Гор. Цинк )

| Product Code-1<br>Код Товара | Product Code-2<br>Код Товара | H<br>mm | W<br>mm | T<br>mm | Weight / Штук<br>(Kg/Pcs) |
|------------------------------|------------------------------|---------|---------|---------|---------------------------|
| AT9-10 PG                    | AT9-10 HDG                   | 100     | 110     | 1,2     | 0,200                     |
| AT9-15 PG                    | AT9-15 HDG                   | 100     | 160     | 1,2     | 0,240                     |
| AT9-20 PG                    | AT9-20 HDG                   | 100     | 210     | 1,2     | 0,275                     |
| AT9-30 PG                    | AT9-30 HDG                   | 100     | 310     | 1,2     | 0,350                     |
| AT9-40 PG                    | AT9-40 HDG                   | 100     | 410     | 1,5     | 0,530                     |
| AT9-50 PG                    | AT9-50 HDG                   | 100     | 510     | 1,5     | 0,625                     |
| AT9-60 PG                    | AT9-60 HDG                   | 100     | 610     | 1,5     | 0,715                     |

